

## PRO-TMS COMMUTE



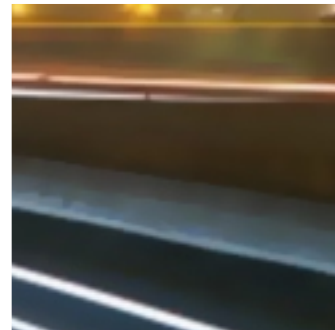
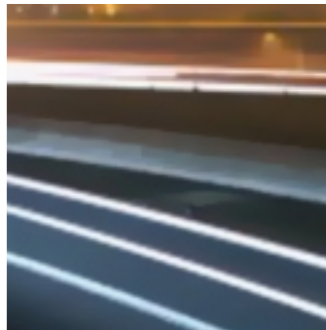
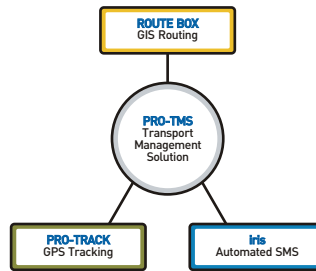
**PRO-TMS Commute** is an internet / intranet based Route Optimization software, developed to meet the needs of logistics professionals, quickly and efficiently solve complex routing and scheduling problems resulting in a quantifiable decrease in the time and cost of employee transportation, this net decrease in costs and overheads, quickly translates to an increase in profits.

PRO-TMS is designed to allow fleet operators to plan the routes, estimate time of travel and keep track of the position of their vehicles at all times.

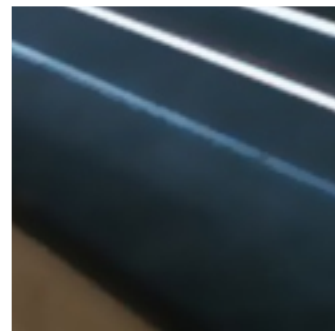
PRO-TMS comes with powerful fleet management applications that run on an intranet environment. This system can be used to analyze vehicle productivity and offers managerial tools to analyze the operating parameters.



- \* Routes generated on Proximity basis.
- \* Generates Routes in less than 1/3 the time taken manually.
- \* Flexibility in changing the parameters to achieve the best quality routes.
- \* Automation of transportation system in the organization.
- \* Improved information visibility.
- \* Reduction in operating errors.
- \* Reduction in operating costs.
- \* Reduction in paperwork and 'manual processes' and 'Workarounds'.
- \* Better management and storage of information.
- \* Savings : savings in Transport bills.
- \* 90% fall in rate of accidents & penalties due to traffic rules violation.
- \* Controlled driving behavior.  
Over speeding incidents reduce drastically.
- \* Reduction in Driver & employee complaints.
- \* Reduction in operation cost & increase in revenue.
- \* Billing : accurate billing on km/trip.
- \* Reduce hiring more vehicles and maximize vehicle utilization.
- \* Online management reports.
- \* Disaster messaging and immediate re-planning.
- \* Vehicle & driver productivity & Management.
- \* Safety : Improved safety & peace of mind (Employees also feel secure).



Proficio's Pro-TMS is the most cost-effective and comprehensive product available for employee transportation solution.



## FEATURE HIGHLIGHTS

**Web based rostering** – Team leaders can login to the intranet application to set schedule for his team members, for the given day. With a user-friendly interface, Team Leaders can quickly & easily set the Login / Logout timings to a group of agents.

**Route Box** - Automated route generation, optimizing the employee configuration, estimates travel time & route distance.

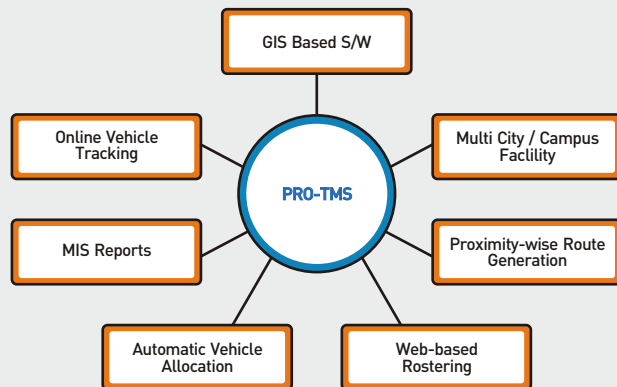
**Female Employee Pickup/Drop Rules** – Set rules to handle last female employee drop & first female employee pickup.

**Back-to-back vehicle allocation** – Efficient vehicle allocation considering the vehicle availability and optimum vehicle usage.

**Map Editor** - Mark One ways, Define zones.

**Customizable Travel Time / Employee Distance Ratio** – Achieve realistic time estimates by defining multiple travel times based on the distance of the employee to the campus.

**Roster Updater** – Dynamically accommodate Changes/Adhoc requests.



**Log Routes** – Archive a day's route composition through out a specified period.

**Trip sheet entry** – Feed trip sheet entries to capture the actual number of employees traveled in the route and KM readings.

**Vehicle auditing** – Audit & Maintain vehicle condition to record documentation and other norms. Maintain penalization details.

**User activity logging** - Track & monitor every activity performed by all the users along with the time stamp.

**Multi city / Multi campus support** - A single installation of PRO-TMS supports transport operations in multiple cities, each having multiple campuses.

**Agent login** – Provides access for the agents to view daily route scheduling, lodging complaints & requests.

**Customizable vendor contracts** - Flexibility to have multiple transport vendors with different contract types (KMs, Slab, Trips, Employees).

**PRO-Track** – Integrates with any GPS providers' unit and download data through HTTP protocol to generate reports that provides you with the critical data you need to measure route performance & track vehicle movement.

**iris** - Integrates with any SMS provider to send automated SMS messages that helps you increase security, maintain privacy and communicate to the employees with information such as Driver's Name, Vehicle Number, Driver Contact Number, Pickup Time / Drop Time.

**MIS Reports, Dashboard.**

